



# Gyrfalcon IntelliEdge Solutions

DIGITIZE, DIGITALIZE, AUTOMATE

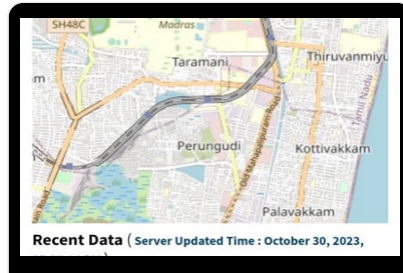
## Who We Are

GYRFALCON™ IntelliEdge Solutions India Pvt Ltd is an Industrie 4.0 startup incubated at IISc Bengaluru focusing on Digitization, Digitalization and Automation Solutions. Towards bridging the IT-oT convergence gap through customized integrations, our solutions provide savings for our customers using GYRFALCON™ IoT gateways with cloud enabled remote monitoring dashboards.

## Our Products



Sensor Gateways



Asset Tracker



UPS Monitoring

Customized sensor solutions for IoT gateways



Customized IoT solutions for Tracking

## Hardware Features Version: GYRAT2022BASE1



Geofence Alerts



Live positioning



Battery Monitoring



Accelerometer



Configurable sensors



Motion Detection



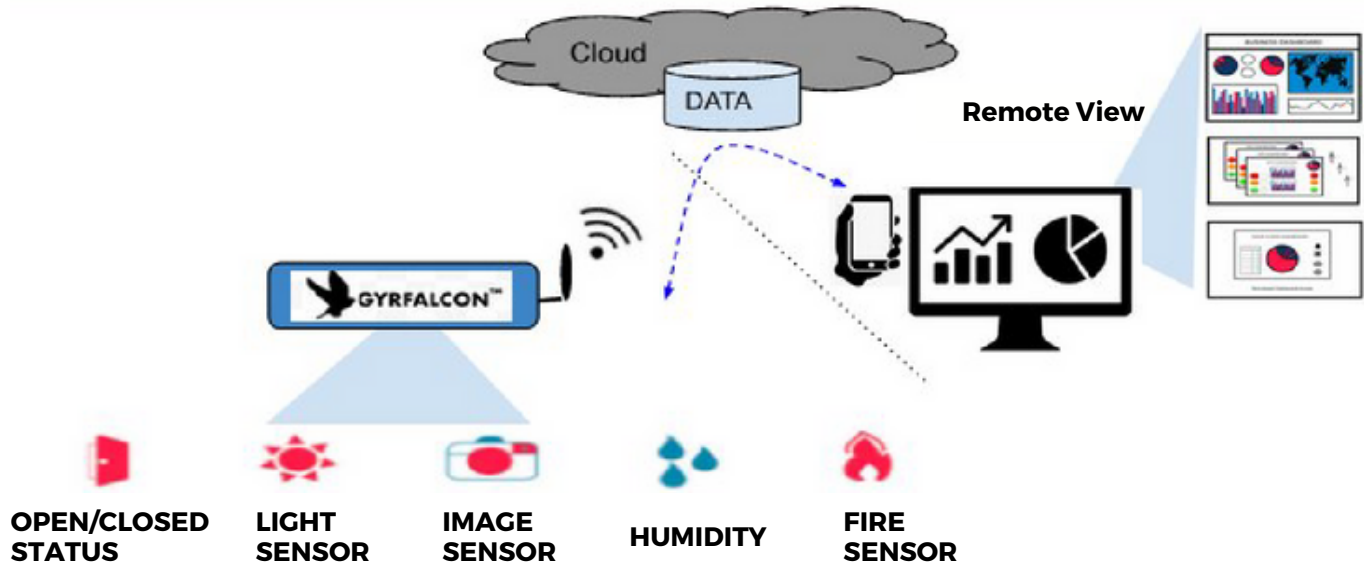
Power Monitoring



Theft Alert

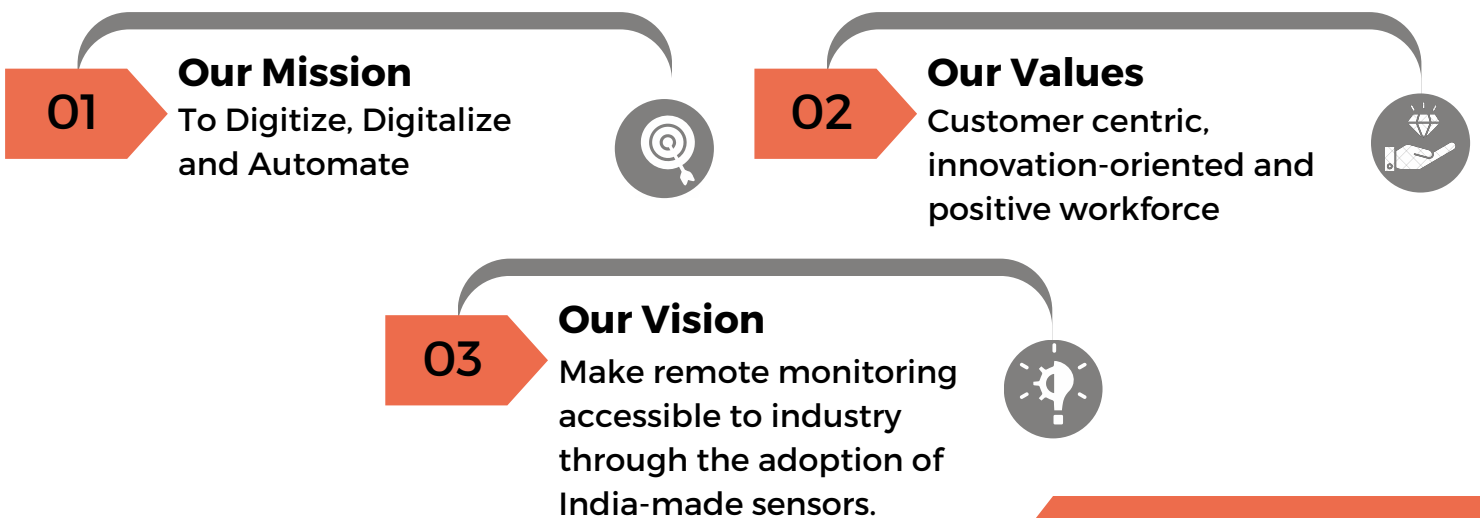
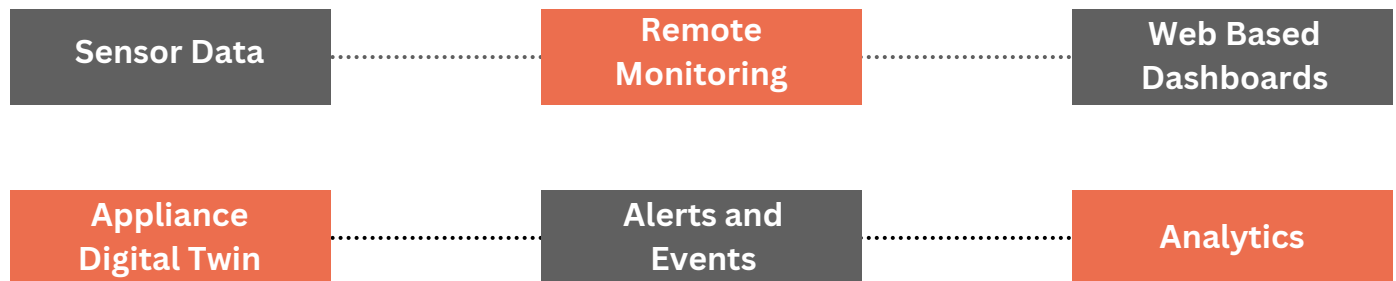
ENABLING INDUSTRIE 4.0 THROUGH IOT

# GYRFALCON™ Intelligent IoT Gateway Devices



Custom Sensors and Edge Alerts on patented IoT Device Management Framework

## We Offer Solutions for IIoT and IoT





”  
**Getting You Ready For An Automated Future With IoT Customisation**

# **GYRFALCON™ IoT gateways with a variety of sensors**



## **TEMPERATURE SENSOR**

Measure the temperature in the target environment to monitor variations precisely



## **WATER LEVEL MONITORING**

Can be monitored to maintain ecosystem management, irrigation management based on real time data



## **AIR QUALITY SENSOR**

Measuring pollution levels for better environment control



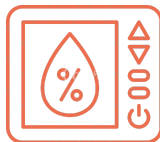
## **GAS/CHEMICAL SENSOR**

Measures gases like CO2, SO2, N2, O2, O3, Eg: Breathalyzer



## **BIOMETRIC SENSOR**

Individual's pattern identification.



## **HUMIDITY SENSOR**

Monitoring humidity changes, such as indoor environments, greenhouses, industrial facilities, storage areas optimal plant growth



## **IMU/VIBRATION SENSOR**

Measuring acceleration, high-frequency vibrations in machinery and industrial equipment.



## **FUEL MONITORING**

Essential in automotive applications, industrial machinery, fuel storage, and other systems where accurate fuel level measurement is critical.



## **OBJECT MEASUREMENT**

Measure distance, detect objects, or determine the presence of an obstacle



## **PROXIMITY SENSOR**

Used for presence detection, positioning, and object recognition in manufacturing and assembly lines.



## **pH Sensor**

Monitoring pH levels in drinking water, wastewater treatment plants





## Customised Solutions

### Configurable Sensors

Vibration monitoring, Battery monitoring, Motion detection, Tamper proof, Fuel Monitoring, Humidity & Temperature monitoring, Others

### Alerts Configuration

Critical events, Set Threshold, Temperature Alerts, Power supply alert.

### Data Rate

Configurable Data Acquisition and Data Upload rates

### Notification support

Email/SMS/Escalation Hierarchy/Audible alarm

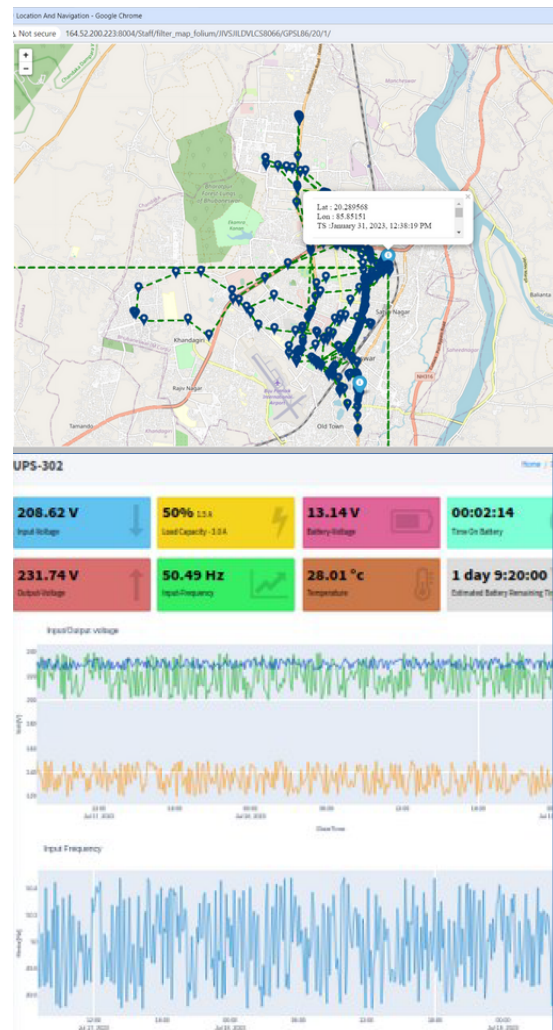
### Actuator Support

Switch on/off on alert, Others

### Others

Multidevice Management, Prediction & Analytics, Custom views, Role based access, Command control access, Data backup/Restore, FOTA

## Dashboard views



## Contact Us



9884039642, 8056473117



contact@gyrfalconIntelliEdge.com



www.gyrfalconIntelliEdge.com



Office: Ashwamedha, No.121, 1st Floor, Velachery Main Road, Guindy, Chennai - 600032, TN  
Regd Office: 1265B, Mittal Tower, MG Road, Yellappa Garden, Shanthala Nagar, Bangalore-560001, KA

